



# Hokkien Mee Diplomacy

## SEMINAR 1

SINGAPORE / MALAYSIA\_Cameron Highland

7-16 July 2019

### Team

Alban MANNISI, Charles ANDERSON, Yazid NINSALAM

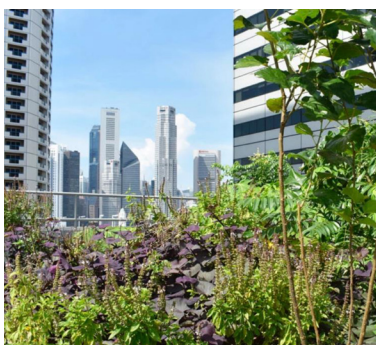
### Topic

Food Security, Spatial Injustice, Environmental Injustice, Urban Density,  
Ecological Imprint, Urban Agriculture,  
Post-City, Singapore, Malaysia





Environmental Justice Inquiry in Singapore and Malaysia (Cameron Highland)



Debate in Singapore with Multi-disciplinary Experts of the Built Environment, Edible Garden City, Civil Society

Environmental Injustice Inquiry in Cameron Highland, Malaysia. Meeting with Farmers, Experts and Civil Society





**Hokkien Mee Diplomacy is the inaugural symposium/workshop of a larger research project entitled Design Diplomacy: The Transmission of Autochthonous Practices & Customs.**

### Aims

Singapore presents itself as an ideal of cultural, political and economic diversity. The quality of life, housing and food is remarkable, yet its food production is 90% foreign and the impact of the growth of its plants is a growing ecological, spatial and ethical disaster for the region of Cameron Highland in Malaysia.

Held in Singapore, this symposium will attempt to decipher the mechanisms of this environmental, spatial and social injustice by meeting a group of established activists and entrepreneurs in Singapore. Called Edible Garden City, this groups' approach aims to re-centralize and densify Singapore agricultural production within its own territory. In the symposium, the RMIT Melbourne team will work with the local partners of Edible Garden City and Agri-Food & Veterinary Authority of Singapore (AVA), to explore the opportunity for Landscape Architects to ensure a better environmental justice.

The team will document the workshop, discuss the issue of environmental injustice, food insecurity and the ecological imprint on Malaysia and then visit agricultural land in the Cameron Island area. The creation of a film will allow the team to be closer to their interlocutors' milieu and to delve into the complexity of the environmental problematics. Engaging with and documenting exogenous speech and visual density of information will allow us to decrypt the unsaid and make present the intangible.

Hokkien Mee Diplomacy is part of a Series of international workshops which aims to provide an overview of the current Singapore/Malaysian environmental Injustice situation; develop critical tools and methodologies of engaging in this arena; provide a systematic compendium of case studies of these complex phenomena for the enthusiastic new generation of landscape architects / planners / environmental designers concerned with the ethical behaviours towards humans and non-humans.





### Objectives

- Organising a Symposia in Singapore and Malaysia with local and International Partners,
- Creating a film that will allow the team to be closer to their interlocutors' milieu and to delve into the complexity of the environmental problematics. Engaging with and documenting exogenous speech and visual density of information will allow us to decrypt the unsaid and make present the intangible.
- The Film will be screened/exhibited in the Super Tight Exhibition organised by Graham Crist and John Doyle for the Design Hub Gallery in 2019 (24.07-21.09 2019)
- Through the series of international embedded on-site workshops. The workshops will be documented and made accessible online. Each workshop will have its own outcome formats: films, photographs, audio recordings, academic articles, exhibitions.

### Itinerary

7th	Departure: Melbourne – Malaysia (Kuala Lumpur)
8th	Kuala Lumpur to Cameron Highland – Train (2/3 hours)
9-10th:	Filming in Cameron Highland
11th	Kuala Lumpur/ Ipoh (Sultan Azlan Shah Airport) to Singapore
12th	Workshop at Garden of Edible Garden City, Singapore
13-14th	Filming in Singapore:
15th	Johor Urban Farming Visit
16th	Arrival: Singapore to Melbourne



## Program

**11.30 -1.30 pm Lunch Meeting with Participants and Others (Ice Break)**

**2.00 pm**

Welcoming / Introduction

**2.30 – 3.30 pm**

### **SESSION 1: FOOD SECURITY**

Participant 1: Academic (Public) TBC

Participant 2: Entrepreneur (Private) TBC

Participant 3: Others TBC

30mn (10mn / Participants) + 30 Mn Roundtable

**3.30 – 4.30 pm**

### **SESSION 2: COMMUNITY ENGAGEMENT**

Participant 1: Academic (Public) TBC

Participant 2: Entrepreneur (Private)

Participant 3: Others

**30mn (10mn / Participants) + 30 Mn Roundtable**

**4.30 – 5.30 pm**

### **SESSION 3: BUILT ENVIRONMENT EXPERTS INVOLVEMENT**

Participant 1: Academic (Public)

Participant 2: Entrepreneur (Private)

Participant 3: Others

30mn (10mn / Participants) + 30 Mn Roundtable

**6-8 pm**

**DINNER & DRINKS**



## Hokkien Mee team

**Alban Mannisi** is a Landscape Urbanist and Senior Lecturer in the School of Architecture and Urban Design. His research focus is on the emerging political ecology implementation in landscape planning and the social ecology deployment through various indigenous environmental mediation. The recent projects decipher the globalisation of sustainable narrative and the foundation of localised citizen resistance to translate intangible landscape components in environmental design. Deeply concerned with environmental, social, and social injustice issues, he develops appropriate environmental observation protocol that translates associated human & non-human conflicts into resilient spaces. With the increasing illegibility of the environmental construction of our societies, he elaborates a Political Philosophy of Landscape to decipher the generation / de-generation & re-generation cogs of our fragile landscape mutation to produce ethical design and equitable planning. Intrigued by how connected histories and hybrid cultures model our scape, he has lived, practiced or taught in France, Korea, Singapore, England, Thailand, Japan and as of now Australia, involving in a variety of projects among 13 different countries in collaboration with the professionals in various fields, such as landscape architects & planners, architects, urban & territorial planners, environmentalists, governmental officers, researchers, and academics. Director of the landscape planning platform SCAPETHICAL ([www.scapethical.org](http://www.scapethical.org)), Alban Mannisi works particularly to enable the visibility of environmental resistance and ecological management hardly appreciated by the built environment expertise.

Contact: [alban.mannisi@rmit.edu.au](mailto:alban.mannisi@rmit.edu.au)



**Charles Anderson** is a Landscape Architect and Artist with over thirty years experience making and exhibiting work in Australia and around the world – with a particular focus on the Asia Pacific region having worked in partnerships on design research and exhibition projects in Japan, China, South Korea and Singapore. Charles' research foregrounds the fertile character of collaborative, interdisciplinary, and process based modes of practice. Advocating new methods of approach and of attentiveness, and exploring new generative procedures, he argues that process thinking is not simply an operational stance, but an ethical position. Taking seriously the relationship between process thinking and place making Charles' research advocates a mode of place making which, rather than reproduce planned environments as systems of control, configures place as a discursive contested meshwork of movement, encounter, and exchange. Charles has a particular expertise in collaborative design research projects. This work has increasingly been attuned to community engagement, participatory and co-design strategies. This has been demonstrated in a number of industry engaged projects recently in including Touchstone, an interactive public artwork in collaboration with City of Casey and researchers across SoAUD and SoD, and an interdisciplinary and collaborative design research project The Exchange which, in partnership with Lendlease, explored the Community engagement in High Density Environments (book published in May 2019). This design research project was funded by Lendlease and given seeding funding by the Design and Creative Practice ECP in 2017.

Contact: [charles.anderson@rmit.edu.au](mailto:charles.anderson@rmit.edu.au)



**Yazid Ninsalam** is a Lecturer in the Landscape Architecture Program. He holds a Doctor of Philosophy in Architecture and was awarded concurrent degrees in Master of Landscape Architecture and Bachelor of Arts (Architecture) with honours from the National University of Singapore. He previously worked as a landscape architect for the National Parks Board of Singapore after spending four years in the Landscape Ecology module as a doctoral researcher at the Future Cities Laboratory, a research program of the Singapore-ETH Centre established by ETH Zurich and Singapore's National Research Foundation. His work as part of the interdisciplinary research project has been disseminated across exhibitions in various locations including Singapore, Jakarta, Zurich, and notably in Rotterdam and Munich - at the Urban by Nature, Sixth International Architecture Biennale Rotterdam and Draussen | Out There Landscape Architecture on Global Terrain, Architekturmuseum der TU München, Pinakothek der Moderne respectively. From 2015 to 2017, he served as council member of the Singapore Institute of Landscape Architects and was appointed as festival director of the 10th Singapore Architecture Festival.

Contact: [yazid.ninsalam@rmit.edu.au](mailto:yazid.ninsalam@rmit.edu.au)

